



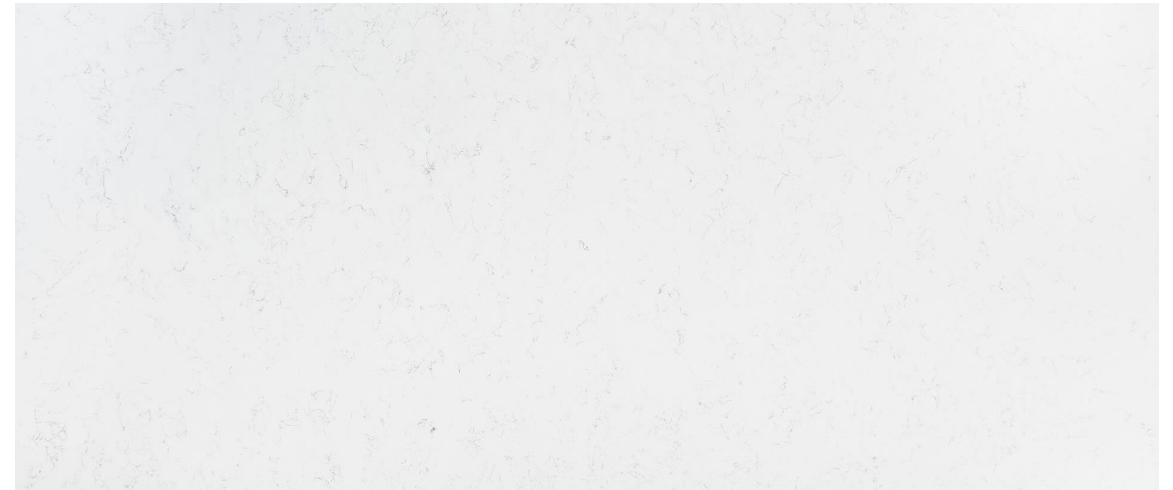
GEM HOMES, LLC

**2328 N Delaware St.
Finish Selections**

Main Kitchen Details

- Custom built cabinets with inset doors; color Perle Noir by Sherwin Williams (very dark grey)
- Quartz countertops with waterfall ends on island (white w/light veining)

<https://www.msisurfaces.com/quartz-countertops/carrara-morro-quartz/>



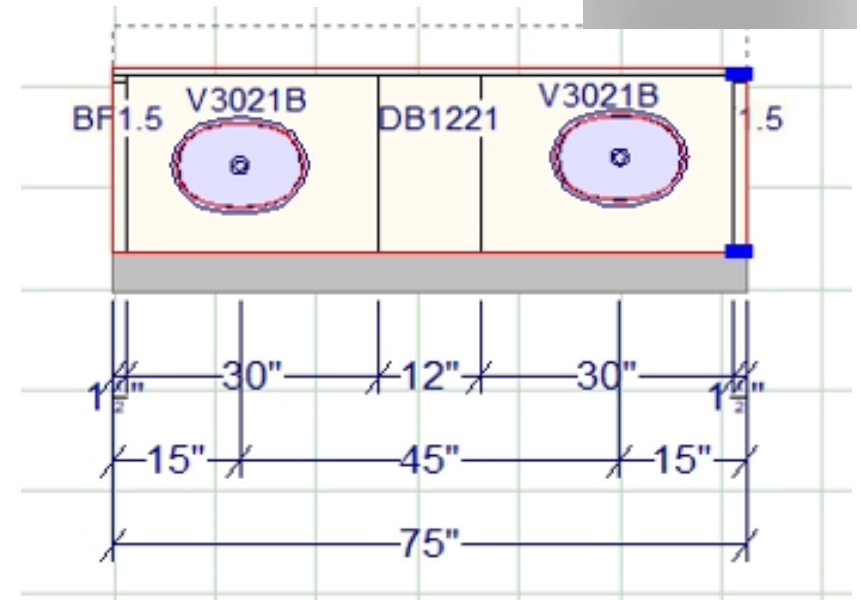
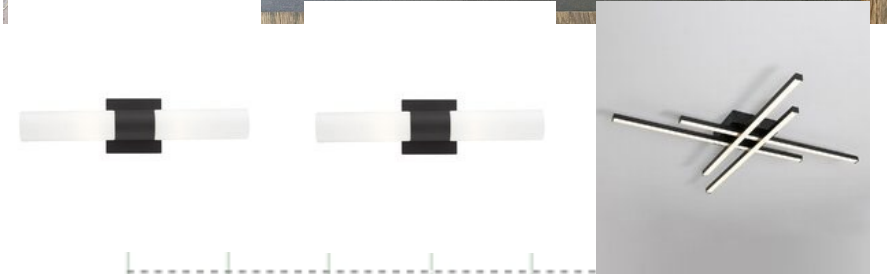
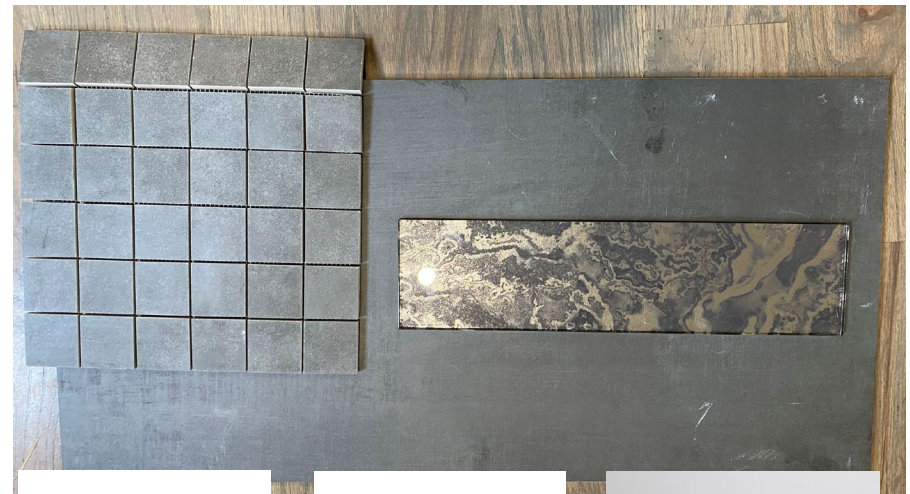
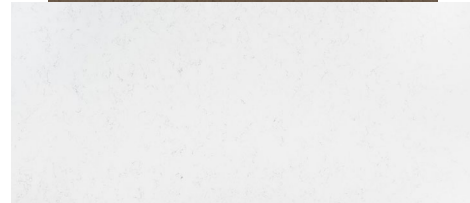
Main Kitchen Appliances

- LG Refrigerator Model #LRSDS2706S
- Forno 36" Gas Range Model #FFSGS6244-36 w/drywalled hoodfan
- LG Dishwasher Model #LDFN3432T
- Sharp microwave drawer



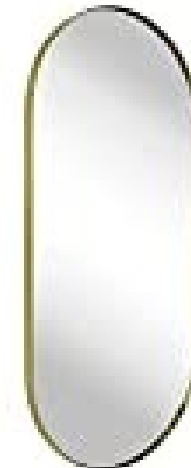
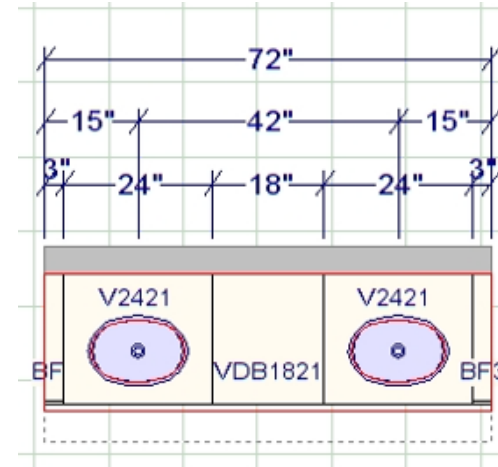
Primary Bathroom

- 75" double vanity
- Carara Morro quartz/vessel sinks
- Black faucet hardware
- Double shower heads
- Glass shower door
- Darker wood vanity
- Black oval mirrors



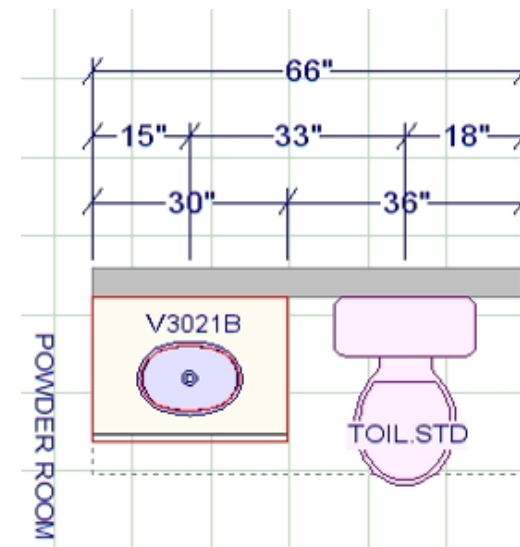
Guest Upstairs Bathroom

- 72" double vanity
- White undermount sinks
- Black faucet hardware
- Darker wood vanity
- Oval gold mirrors
- Calacatta Delios quartz (white w/mild veining)



Powder Room

- 30" darker wood vanity
- Black faucet hardware
- Stone countertop
- Vessel sink
- Round gold mirror
- Marquina Midnight quartz (black quartz w/white veining)



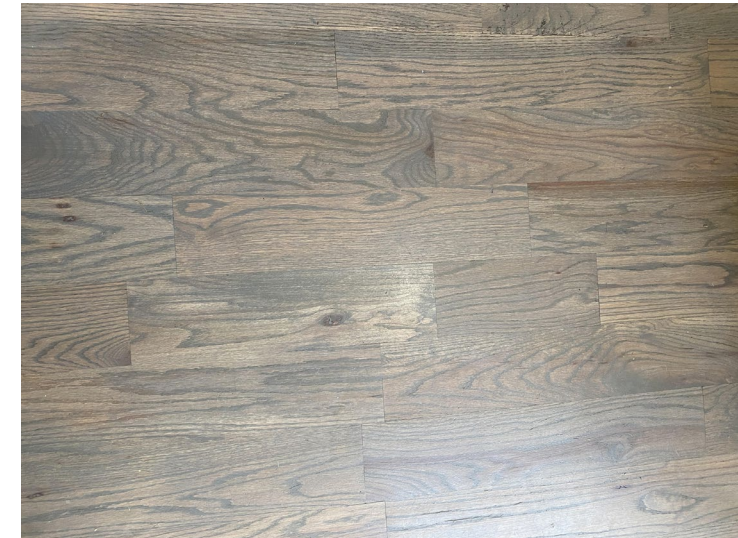
Basement Bathroom

- 30" vanity
- Stone countertop
- Black faucet hardware



Flooring

- Main level and upstairs hallway = red oak hardwood-stained classic grey.
- All bedrooms & basement = carpet (dark grey)
- Laundry Room = patterned tile
- Stair treads will also be red oak, stained to match
- Risers will be painted



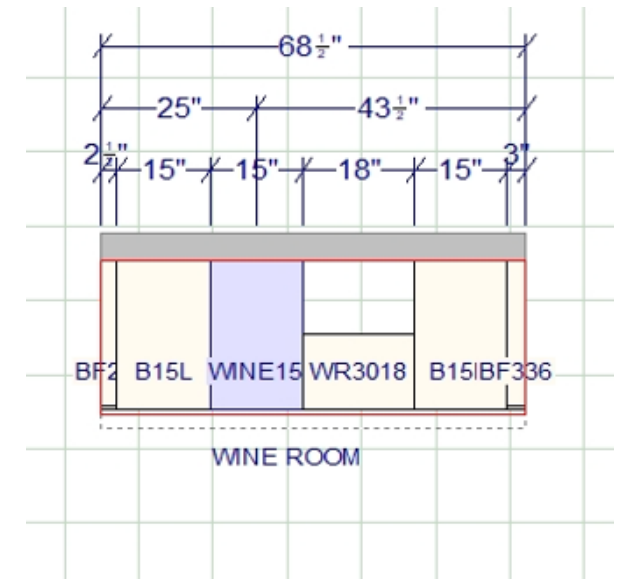
Interior Doors

- Jeld-wen solid core: 8 ft. doors on main
- Painted Perle Noir by Sherwin Williams (very dark grey/same as kitchen cabinets)
- Matte black hinges and door knobs



Wine Room

- Drybar with wine fridge
- Wallpapered
- Dark wood vanity
- Calacatta Delios quartz



Lighting

- Kitchen Island Pendant



- Wine Room Chandelier



- Stair Chandelier



- Dining Room Chandelier



- Office Chandelier

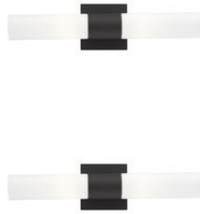


- Closet Lights



Lighting

- Primary Bathroom



- Powder Room



- Basement Bedroom Fans



- Guest Bathroom



- Upstairs Bedroom Fans



- Exterior Garage Lights

